

FEDERAL SUPPLY CLASS  
5306

REV.  
B

RATIONALE

REVISE LEAD END CHAMFER REQUIREMENT (TO CONFORM TO AS1132), ADD NEW NOTE FOR DISPOSITION OF EXISTING INVENTORY (SEE NOTE 10), GENERAL EDITORIAL REVISIONS.

AS3149™

SAE Technical Standards Board Rules provide that: "This report is published by SAE to advance the state of technical and engineering sciences. The use of this report is entirely voluntary, and its applicability and suitability for any particular use, including any patent infringement arising therefrom, is the sole responsibility of the user." SAE invites your written comments and suggestions. SAE reviews each technical report at least every five years at which time it may be revised, reaffirmed, stabilized, or cancelled.

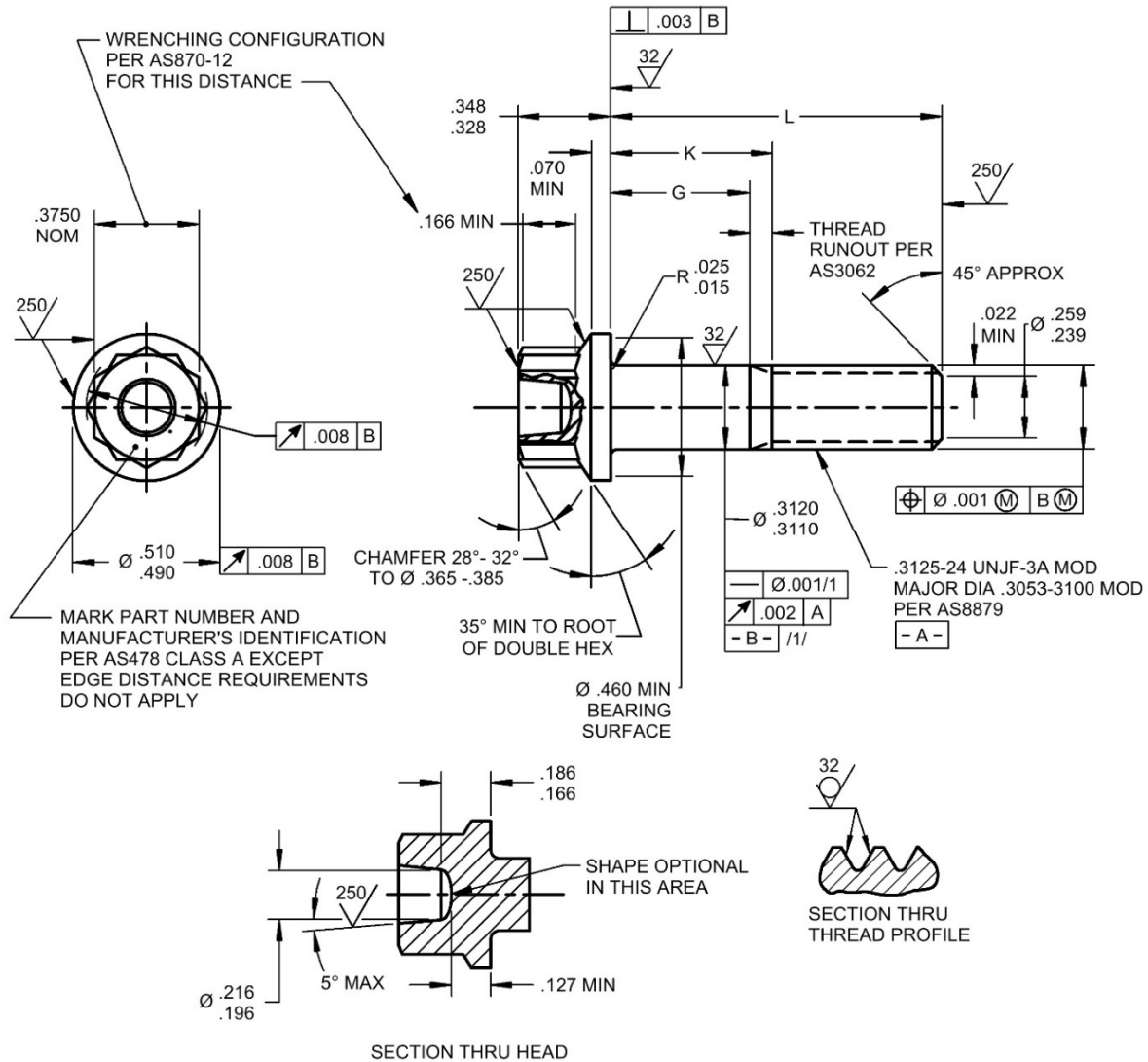
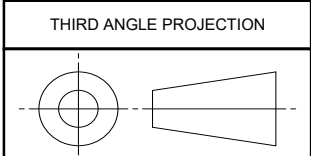


FIGURE 1 - BOLT

SAE values your input. To provide feedback on this Technical Report, please visit <http://standards.sae.org/AS3149B>



CUSTODIAN: E-25

PROCUREMENT SPECIFICATION: AS7461 /8/



**AEROSPACE STANDARD**  
BOLT, MACHINE - DOUBLE HEXAGON EXTENDED WASHER HEAD, CLOSE TOLERANCE SHANK, AMS4967 (UNS R56400), 1600 KSI, .3125-24 UNJF-3A

AS3149™  
SHEET 1 OF 3

REV.  
B

ISSUED 1976-11 REAFFIRMED 2006-05 REVISED 2019-04